



2015 EARLYBIRD DEALS



**OFFER
EXTENDED!**
Offer ends
30 Sep 2014

SAVE \$1200 PER
COUPLE*

Book select 2015 Avalon Waterways
European river cruises and
SAVE \$1200 per couple
(Full list of cruise departures over page)



SAVE \$650 PER
COUPLE*

Book ANY
2015 Avalon Waterways
European river cruise and
SAVE \$650 per couple



SAVE \$1200 PER COUPLE* ON



PARIS TO NORMANDY'S LANDING BEACHES

8 days Paris to Paris

NOW from **\$2,733** per person, twin share
(based on 24/03/15 Cat E)

Applicable departures

21, 25 Apr; 2, 13, 23, 30 Jun; 4, 7, 11, 14, 21, 25, 28 Jul; 4, 11, 15, 18, 25 Aug; 6, 20, 24, 27, 31 Oct 2015



ROMANTIC RHINE

8 days between Zurich and Amsterdam

NOW from **\$2,672** per person, twin share
(based on 14/12/15 Cat D)

Applicable departures - Amsterdam to Basel

7 Apr; 2 May; 9, 28 Jun; 4, 12 Jul; 1, 9, 21, 23 Aug; 2, 18, 24 Oct; 1 Nov 2015

Applicable departures - Zurich to Amsterdam

7 Apr; 10 May; 7, 21, 27 Jun; 31 Jul; 2, 14, 16, 22, 30 Aug; 9, 25, 31 Oct; 14 Dec 2015



AUSTRIAN HIGHLIGHTS AND BAVARIA

9 days between Vienna and Munich

NOW from **\$3,168** per person, twin share
(based on 07/04/15 Cat E)

Applicable departures - Vienna to Munich

17 Jul; 9 Oct 2015



BURGUNDY & PROVENCE

11 days between Cote d'Azur and Paris

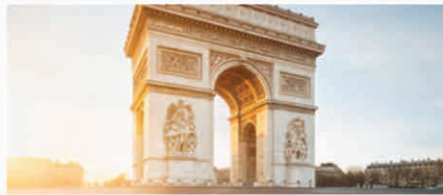
NOW from **\$3,890** per person, twin share
(based on 23/03/15 Cat E)

Applicable departures - Cote d'Azur to Paris

10 Apr; 4 May; 19, 29 Jun; 13, 17, 27, 31 Jul; 10, 14, 24, 28 Aug; 9, 19, 23 Oct 2015

Applicable departures - Paris to Cote d'Azur

29 Mar; 2, 12, 26 Apr; 7, 21 Jun; 5, 19, 23 Jul; 2, 6, 16, 30 Aug; 29 Oct 2015



CANALS, VINEYARDS & PARIS

10 days between Paris and Amsterdam

NOW from **\$3,980** per person, twin share
(based on 28/10/15 Cat E)

Applicable departures - Paris to Amsterdam

23 Apr; 28 Oct 2015

Applicable departures - Amsterdam to Paris

23 Oct 2015



CAPITALS OF CENTRAL EUROPE

10/12 days between Prague and Budapest

NOW from **\$3,512** per person, twin share
(based on 16/04/15 Cat E)

Applicable departures - Budapest to Prague

22 Apr; 7 Oct 2015

Applicable departures - Prague to Budapest

29 Apr; 5 Jul; 12, 14 Oct 2015



NOT AVAILABLE
see website for other dates
& Save \$650 per couple

TULIP TIME CRUISE

8 days Amsterdam to Amsterdam

NOW from **\$2,613** per person, twin share
(based on 31/03/15 Cat E)

Applicable departures

31 Mar; 2, 16, 30 Apr; 1 May 2015



THE RHINE & MOSELLE

13 days between Amsterdam and Zurich

NOW from **\$5,520** per person, twin share
(based on 30/10/15 Cat D)

Applicable departures - Zurich to Amsterdam

13 Jul; 28 Aug 2015

Applicable departures - Amsterdam to Basel

30 Oct 2015



THE LEGENDARY DANUBE

11 days Prague to Budapest

NOW from **\$4,021** per person, twin share
(based on 24/10/15 Cat D)

Applicable departure

23 Jun; 4, 21 Jul; 4 Aug; 10, 24 Oct 2015



TULIPS OF NORTHERN HOLLAND

8 days Amsterdam to Amsterdam

NOW from **\$2,853** per person, twin share
(based on 09/04/15 Cat E)

Applicable departure

11, 23 Apr 2015



A TASTE OF THE DANUBE

8 days Budapest to Vienna

NOW from **\$1,923** per person, twin share
(based on 04/10/15 Cat E)

Applicable departures - Budapest to Vienna

23 Apr; 4 Oct 2015

Applicable departures - Vienna to Budapest

25 Jun 2015



THE BLUE DANUBE DISCOVERY

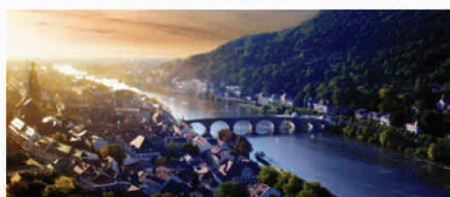
13 days Budapest to Prague

NOW from **\$3,891** per person, twin share
(based on 01/04/15 Cat E)

Applicable departures

10 Jun; 1, 12, 15 Jul; 19, 23 Aug; 18, 27, 28 Oct 2015

SELECT DEPARTURES



CENTRAL EUROPEAN EXPERIENCE

12 days between Prague and Paris

NOW from \$4,172 per person, twin share
(based on 03/11/15 Cat E)

Applicable departures - Prague to Paris
14 Jul, 11 Aug; 3 Nov 2015



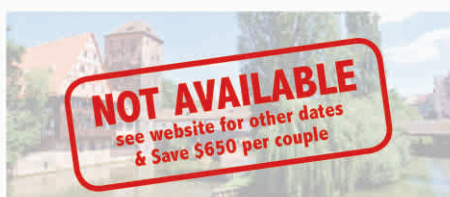
MAGNIFICENT EUROPE

15 days between Amsterdam and Budapest

NOW from \$5,340 per person, twin share
(based on 21/12/15 Cat E)

Applicable departures - Amsterdam to Budapest
28 Mar; 5 Jun; 17, 28 Jul; 21 Dec 2015

Applicable departures - Budapest to Amsterdam
27 Mar; 8 May; 16 Jun; 14 Jul; 25 Aug; 21, 23 Oct 2015



THE UPPER RHINE TO THE CITY OF MUSIC

12 days Zurich to Vienna

NOW from \$4,890 per person, twin share
(based on 20/08/15 Cat E)



BALKAN DISCOVERY

10 days between Bucharest and Budapest

NOW from \$3,847 per person, twin share
(based on 15/04/15 Cat E)

Applicable departures - Budapest to Bucharest
24 Jun 2015

Applicable departures - Bucharest to Budapest
5 Jun; 14 Aug 2015



HIGHLIGHTS OF GERMANY

13 days between Munich to Basel

NOW from \$5,309 per person, twin share
(based on 19/07/15 Cat E)

Applicable departures
19 Jul; 29 Sep 2015



BLUE DANUBE TO THE BLACK SEA

14 days between Bucharest and Vienna

NOW from \$5,784 per person, twin share
(based on 14/10/15 Cat E)

Applicable departures - Vienna to Bucharest
12 Oct 2015

Applicable departures - Bucharest to Vienna
26 Apr; 1, 22 Jul; 14 Oct 2015



EUROPEAN SPLENDOR

13 days between Vienna and Amsterdam

NOW from \$5,110 per person, twin share
(based on 25/10/15 Cat E)

Applicable departures
3 May; 12 Jul; 2 Aug; 25 Oct 2015

ASK US ABOUT OUR ASIA & SOUTH AMERICA CRUISES

Cruise along the Mekong,
Irrawaddy & Amazon Rivers

OR
**SAVE
\$650**

PER COUPLE*
ON ANY EUROPEAN
RIVER CRUISE

Book **ANY** 2015 Avalon Waterways
European river cruise and
SAVE \$650* per couple

Popular itineraries include:



MAGNIFICENT EUROPE

15 Days

between Amsterdam and Budapest

Amsterdam, Cologne, Rhine Gorge,
Rudesheim, Miltenberg, Wurzburg,
Bamberg, Nuremberg, Regensburg,
Passau, Melk, Durnstein, Vienna,
Bratislava, Budapest



ROMANTIC RHINE

8 Days

between Zurich and Amsterdam

Zurich, Strasbourg, Speyer, Heidelberg,
Mainz, Rudesheim, Rhine Gorge,
Koblenz, Cologne, Amsterdam



NEW! RHINE & RHONE REVEALED

16 Days

between Amsterdam and Cote d'Azur

Amsterdam, Cologne, Koblenz, Mainz,
Heidelberg, Strasbourg, Basel, Beaune,
Tournus, Macon, Lyon, Tournon,
Avignon, Arles, Cote d'Azur

AVALON WATERWAYS SUITES & STATEROOMS

PANORAMA CLASS ROYAL SUITES

2 PER SUITE SHIP



PANORAMA CLASS PANORAMA SUITES

50 - 65 PER SUITE SHIP



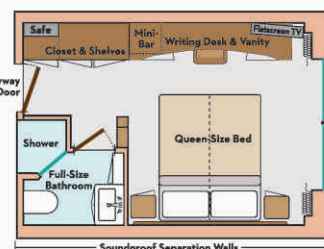
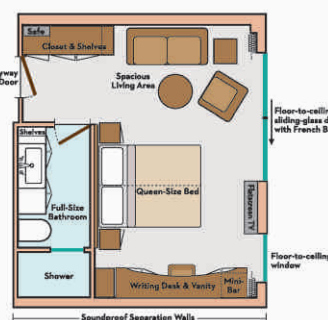
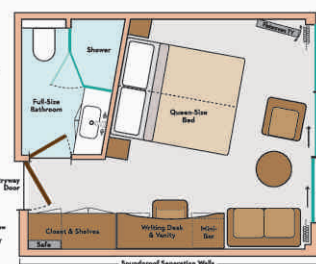
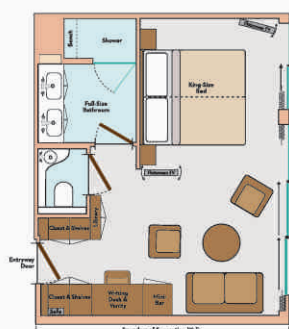
SCENERY CLASS AVALON SUITES

2 - 4 PER SHIP



SCENERY CLASS DELUXE STATEROOMS

65 - 68 PER SHIP



Please note: Deluxe Staterooms on Scenery class (Cat E) & Panorama class (Cat E & D) feature port-hole windows

ALL SUITES & STATEROOMS INCLUDE

- Comfort Collection by Avalon™, featuring premium mattress covers, Egyptian super-combed cotton linens & European-style duvets
- Choice of soft or firm pillows
- Extra blankets
- Choice of bed configuration (twin or queen)
- Nightly turn-down service
- Bedside tables with reading lamps
- Floor-to-ceiling sliding-glass doors (except staterooms on Indigo deck)
- Large private bathroom featuring full shower with glass door, hairdryer & premium L'Occitane® bath amenities
- Spacious 3-door closets with shelves for ample storage
- Easy under-bed luggage storage
- Flatscreen satellite TV with movie channels
- Alarm clock
- Writing desk/vanity with comfortable chair & mirror
- Complimentary Wi-Fi access
- Direct-dial telephone
- Bathrobes & slippers
- Well-stocked minibar
- Complimentary bottled water
- In-room safe
- Individual climate control
- Continental breakfast & beverage room service available (service charge applies)

PLUS - JOURNEYS CLUB MEMBERS RECEIVE **5% DISCOUNT** AND ADDED BENEFITS*



**Discover
Travel**

Experience. The Difference.

*Terms & conditions. All offers valid for new booking to 30/09/14 or until sold out. **Save \$1200 per couple on select 2015 Avalon Waterways European cruise itineraries and departures. ***Save \$650 per couple - valid on any 2015 Avalon European river cruise. Prices are per person twin share and include discount, cruise, port charges & gratuities. All care is taken to promote correct pricing at time of printing, is dependent upon availability and will be confirmed at time of reservation. Offer not applicable to Avalon/Royal Suites (Jnr Suites). Valid for Singles-single supplement applies. Offer may not be combined except with Early Payment, Second Tour and Repeat Traveller discounts (must present Journeys Club number at time of booking and before deposit is paid to receive 5% repeat traveller discount on the Avalon core cruise/package and on twin share price (Category E), not including upgrades, extra night accommodations, extensions, taxes/fees, tips and supplements/reductions). Non-refundable, non-transferable deposit of \$500pp/ per cruise required within 7 days of booking to secure reservation. Offers can be withdrawn or amended at any time. Additional restrictions may apply. For full terms and conditions see the 2015 Avalon Waterways Brochure or visit www.avalonwaterways.co.nz.

Cnr Oxford Tce & Montreal St Phone 0800 747 737 or 03 364 3400 Email info@discovertravel.co.nz discovertravel.co.nz